



61, Lal Bahadur Shastri Road, Formerly HC Banerjee Lane
Konnagar-712235, West Bengal
Contact +91 77956 65086
HIRA/P/HOO/2020/000906
WBHIRA Website : www.hiraservices.wb.gov.in

Disclaimer: Specifications, amenities, information, images, visuals shown in this promotional document is/are indicative of the envisaged development and are subject to change.
Images used are "Rendered Images" and are only indicative. The Developer reserves rights to make additions, deletions, alterations or amendments as and when it deems fit and proper.
All intending Allottee/s are bound to inspect and appraise themselves of all relevant information prior to making any purchase decisions.



PLANNED TO PERFECTION



THIS IS WHERE YOU BELONG.



Urban Lakes is truly a unique home. This is one home every resident will love to come back to. After all it takes care of every need of the residents with its modern facilities and amenities while at the same time letting them enjoy life in the midst of Nature with its three lakes and ample greenery. But what's even better is the thoughtful designing that makes life here so much more pleasurable.



SITE PLAN

LEGEND

- 1. Konnagar Station
- 2. Gate
- 3. Driveway
- 4. Badminton Court
- 5. Kids' Playground
- 6. Services
- 7. Open Air Gym
- 8. European Themed Garden
- 9. Multipurpose Court
- 10. Landscape Area
- 11. Lakeside Promenade
- 12. Lakes
- 13. Clubhouse

Map not scale

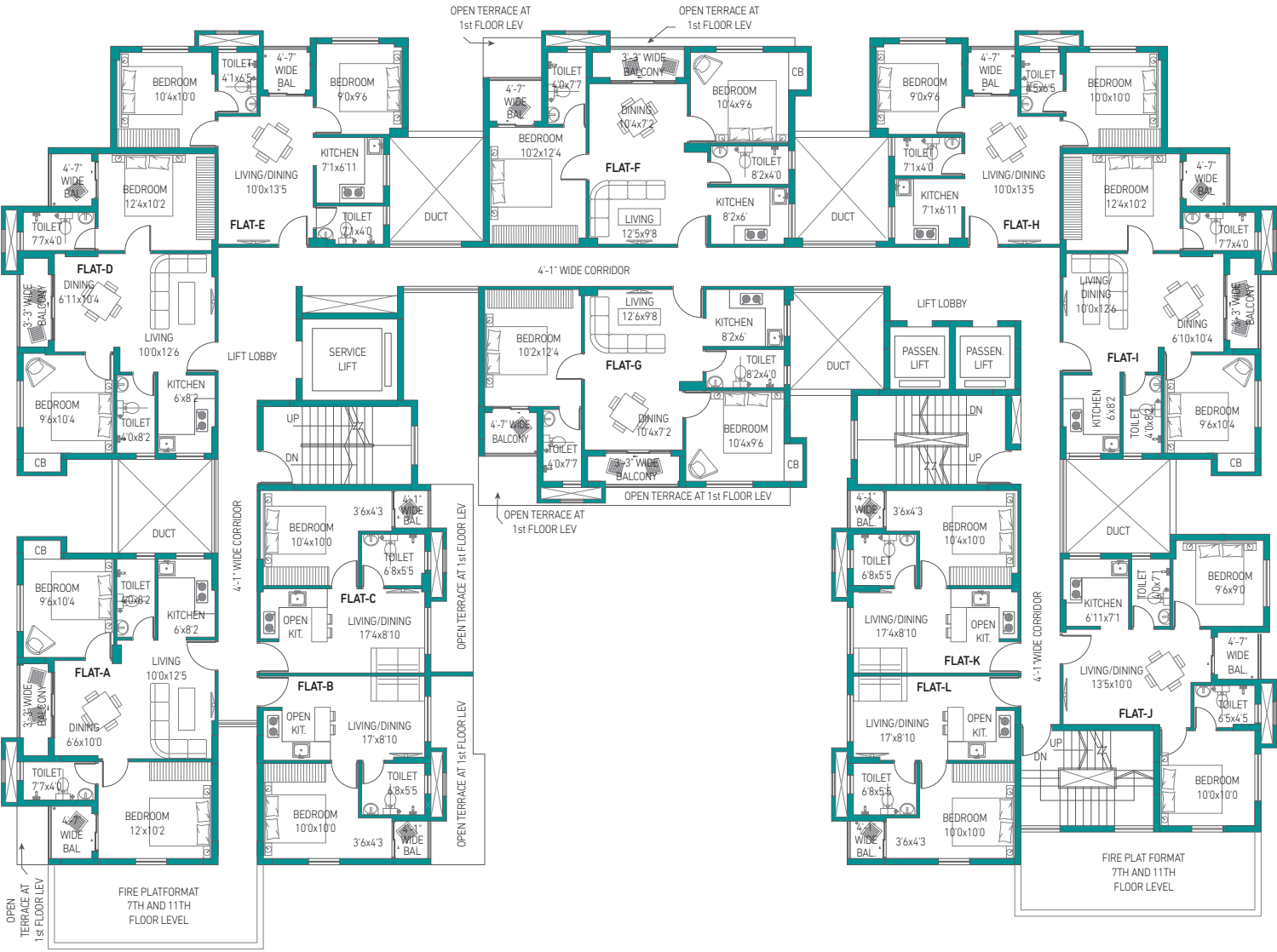


TOWER 1

Flat No.	Type (No. of Bedrooms)	Carpet Area	Balcony Area	Open Terrace Area
A	2	549	56	20
B	1	308	15	103
C	1	313	15	89
D	2	554	56	0
E	2	447	23	0
F	2	554	56	8
G	2	554	56	21
H	2	447	23	0
I	2	554	56	0
J	2	448	23	0
K	1	313	15	0
L	1	308	15	0

TOWER 1 [G+XII]

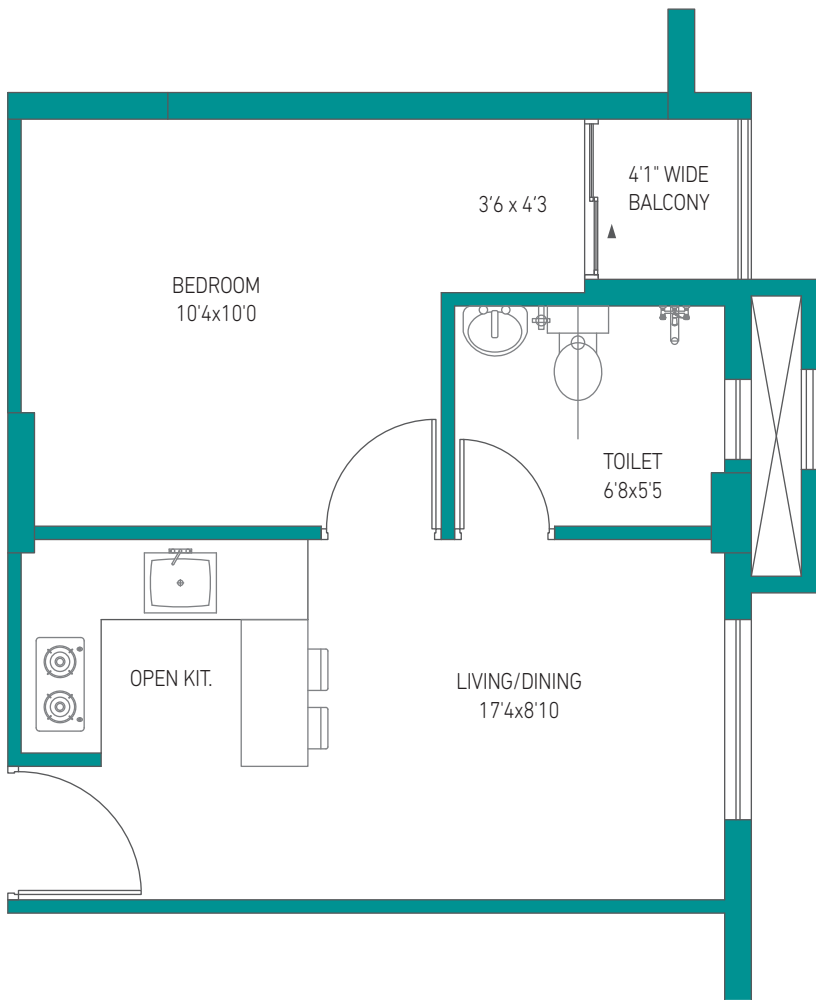
TYPICAL FLOOR PLAN



TOWER 1 [G+XII]

FLAT TYPE C (1 BHK)

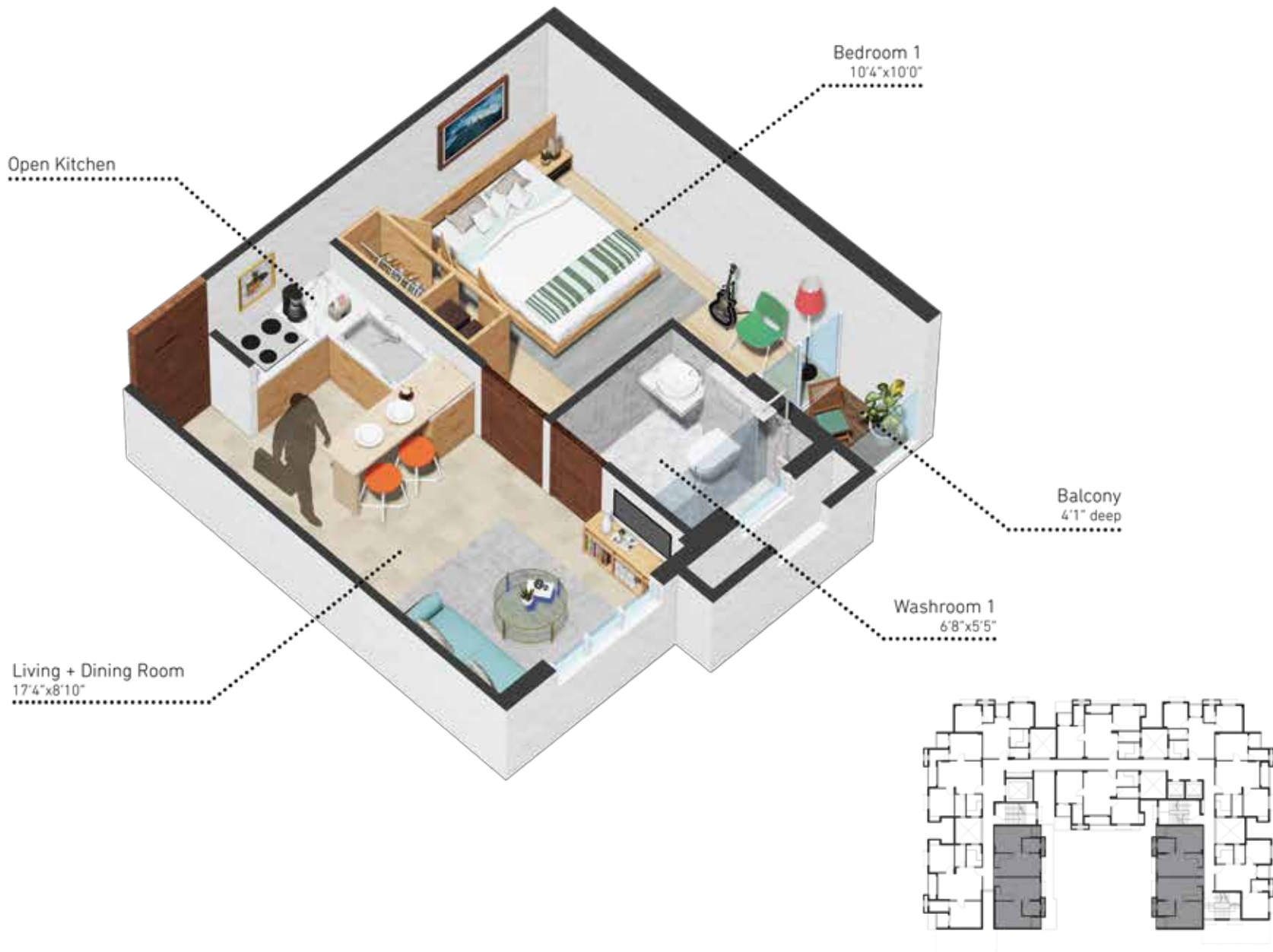
2nd to 12th Floor



TOWER 1 [G+XII]

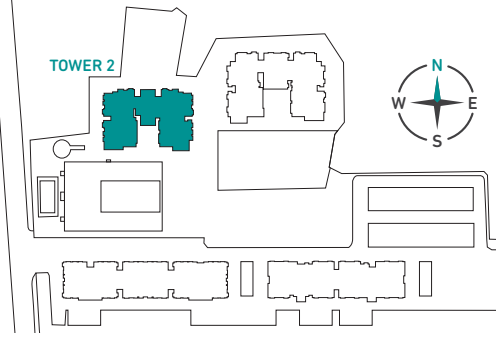
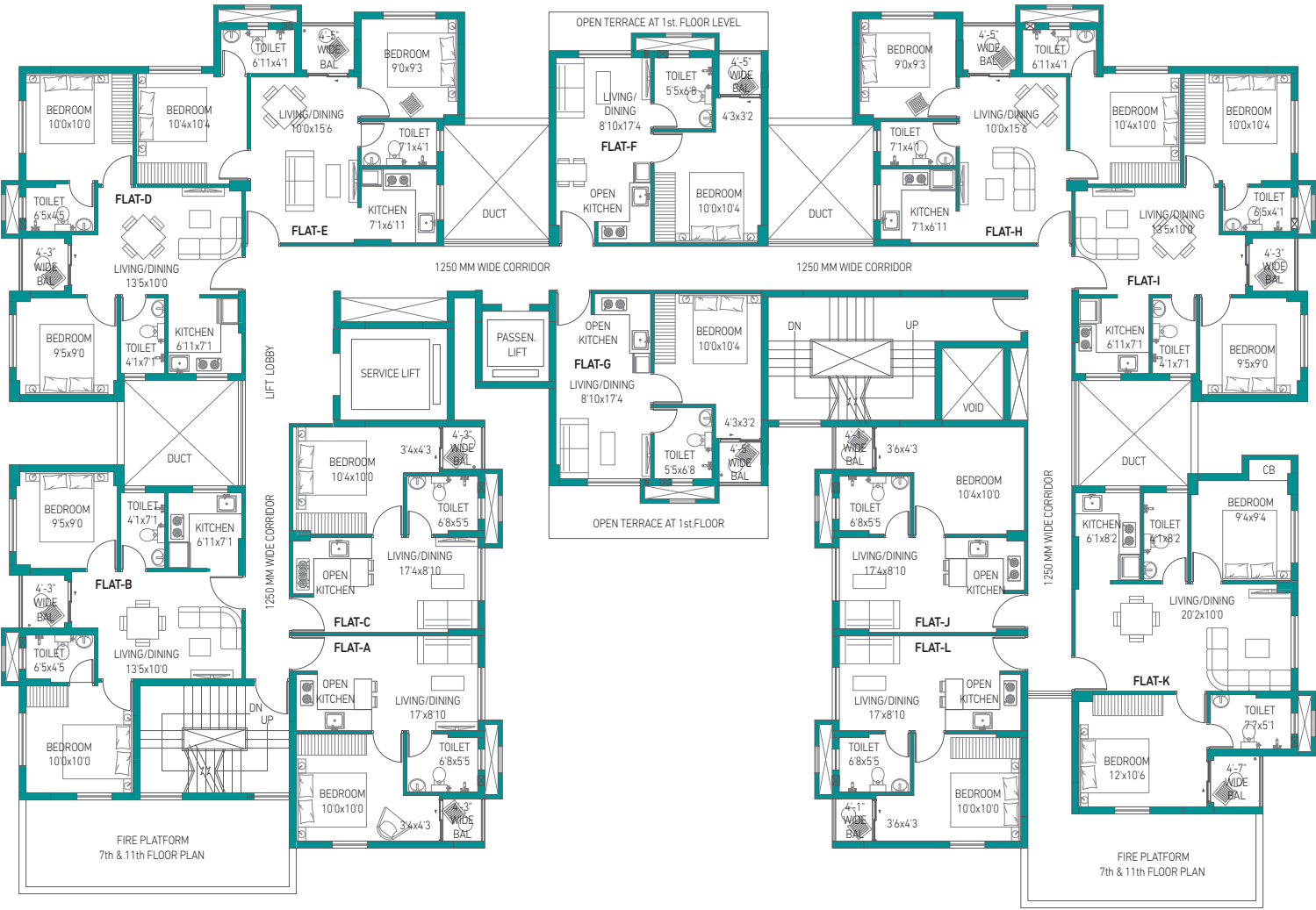
TYPICAL UNIT PLAN (1 BHK + 1T)

FLAT C, K



Flat No.	Type (No. of Bedrooms)	Carpet Area	Balcony Area	Open Terrace Area
A	1	307	15	0
B	2	450	21	0
C	1	312	15	0
D	2	450	21	0
E	2	463	22	0
F	1	311	16	74
G	1	311	16	101
H	2	463	22	0
I	2	450	21	0
J	1	313	15	0
K	2	560	22	0
L	1	308	15	0

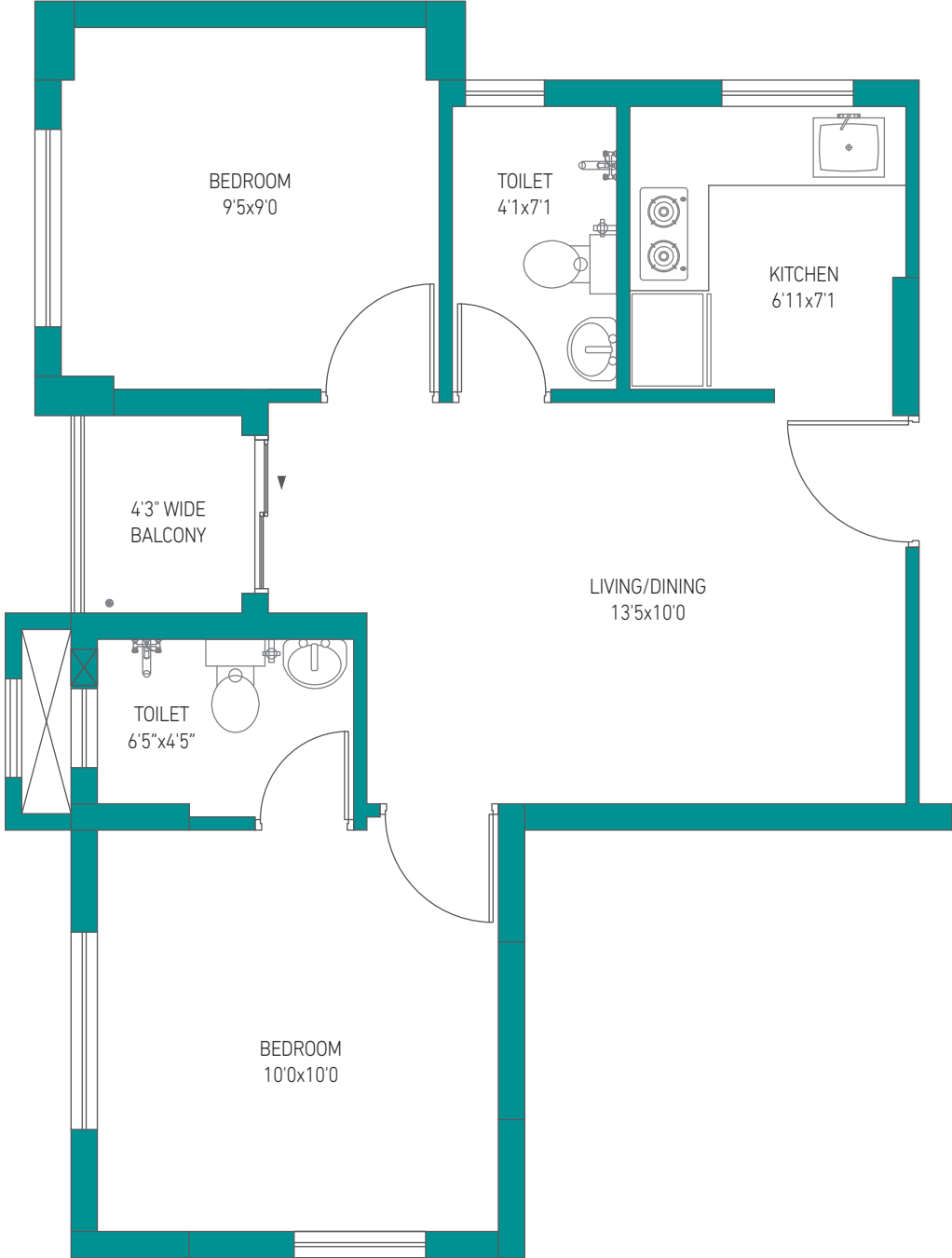
TYPICAL FLOOR PLAN



TOWER 2 [G+XII]

FLAT TYPE B (2 BHK)

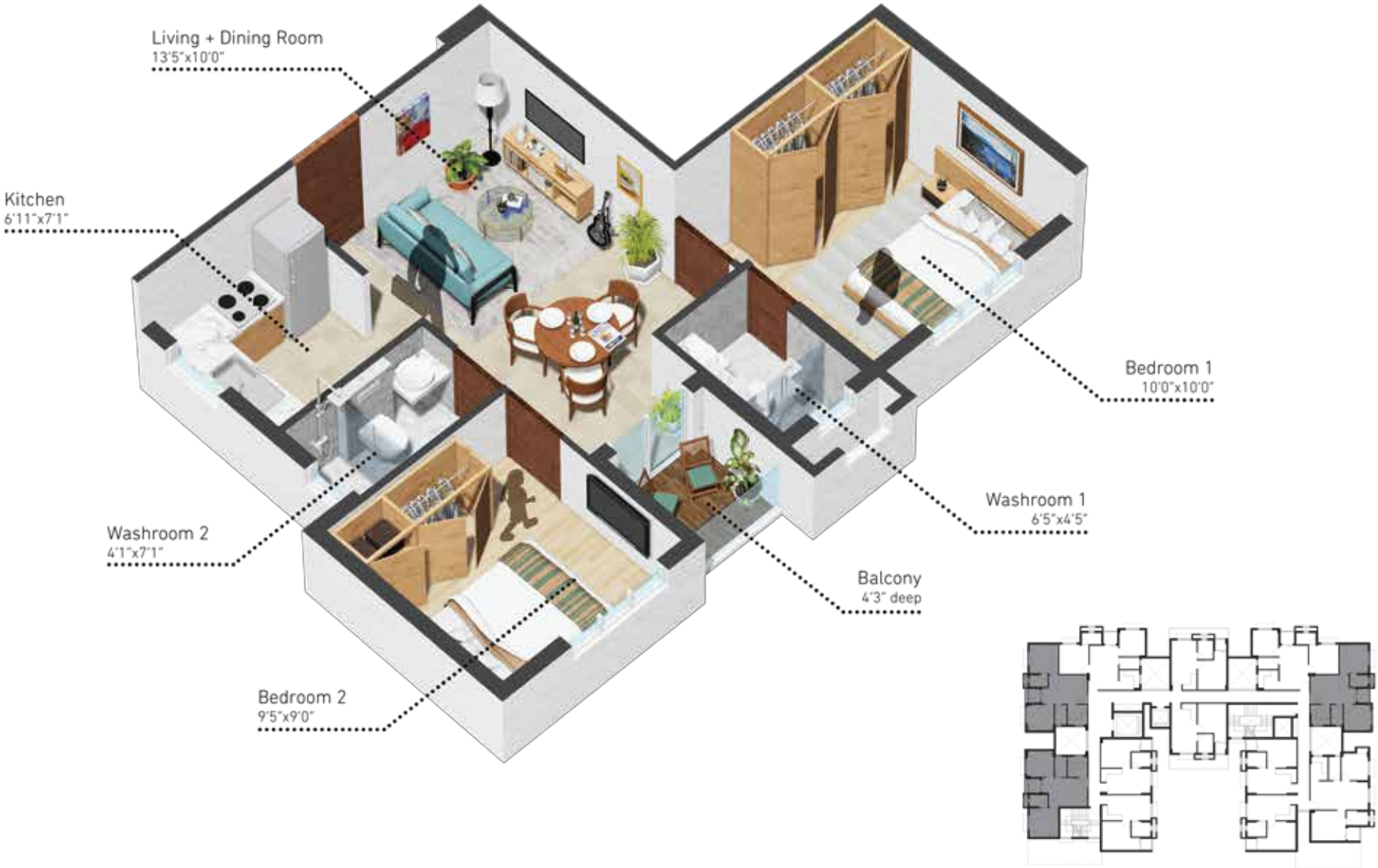
2nd to 12th Floor



TOWER 2 [G+XII]

TYPICAL UNIT PLAN (2 BHK + 2T)

FLAT B, I



Flat No.	Type (No. of Bedrooms)	Carpet Area	Balcony Area	Open Terrace Area
A	2	554	26	29
B	2	554	26	29
C	2	557	26	29
D	2	557	26	29
E	2	463	21	0
F	2	478	21	0
G	2	456	21	0
H	2	472	21	0
I	2	557	26	29
J	2	557	26	29
K	2	554	26	29
L	2	554	26	29

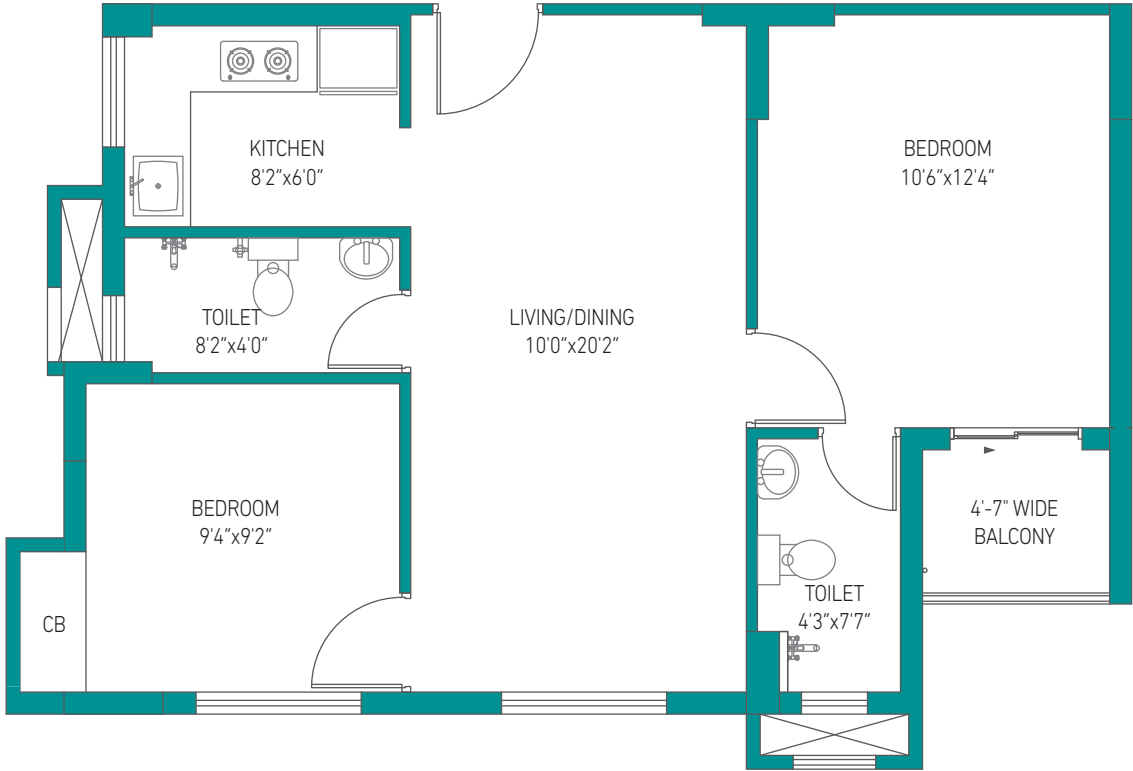
TYPICAL FLOOR PLAN



TOWER 3 [G+XII]

FLAT TYPE B (2 BHK)

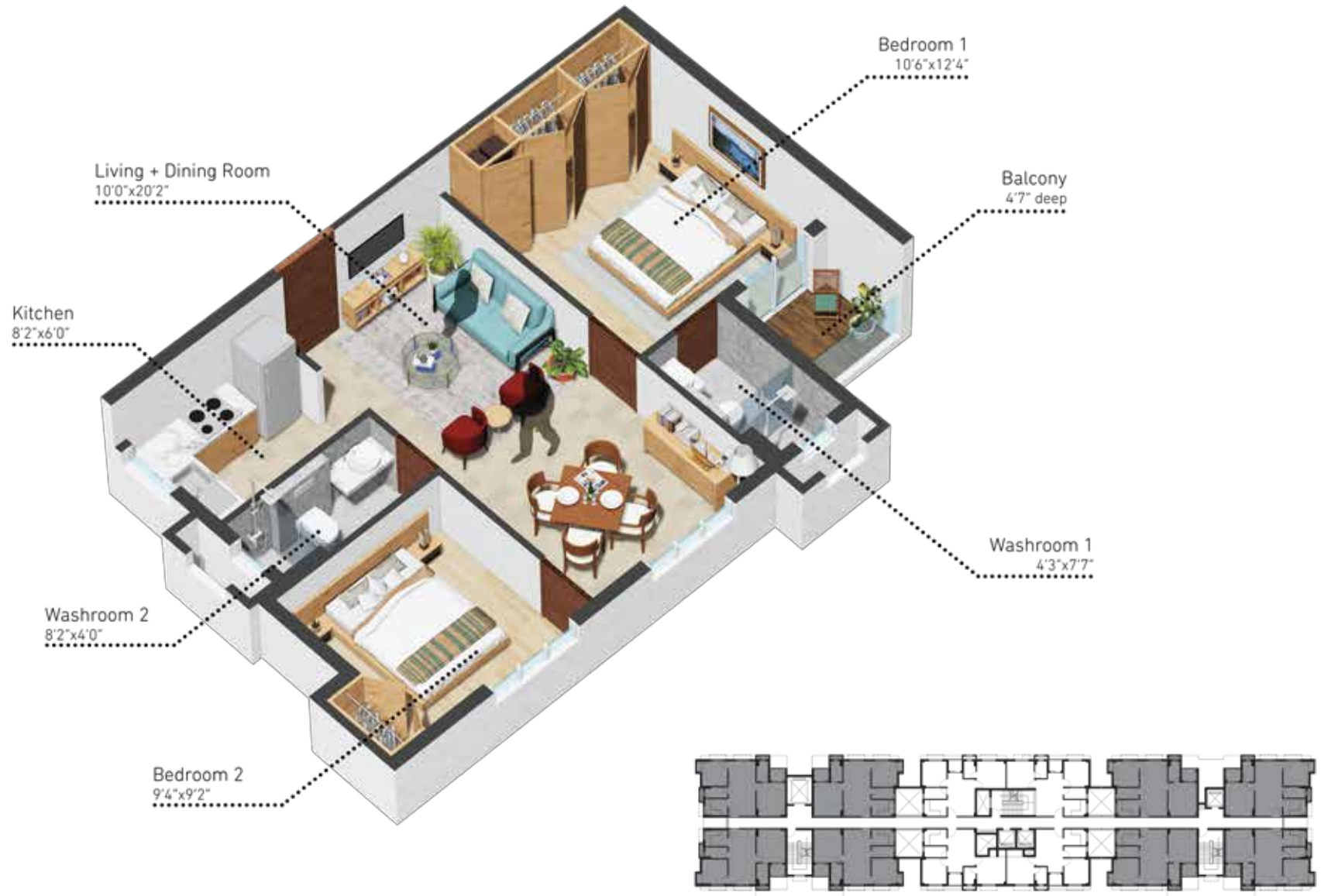
2nd to 12th Floor



TOWER 3 [G+XII]

TYPICAL UNIT PLAN (2 BHK + 2T)

FLAT B, C, F, J

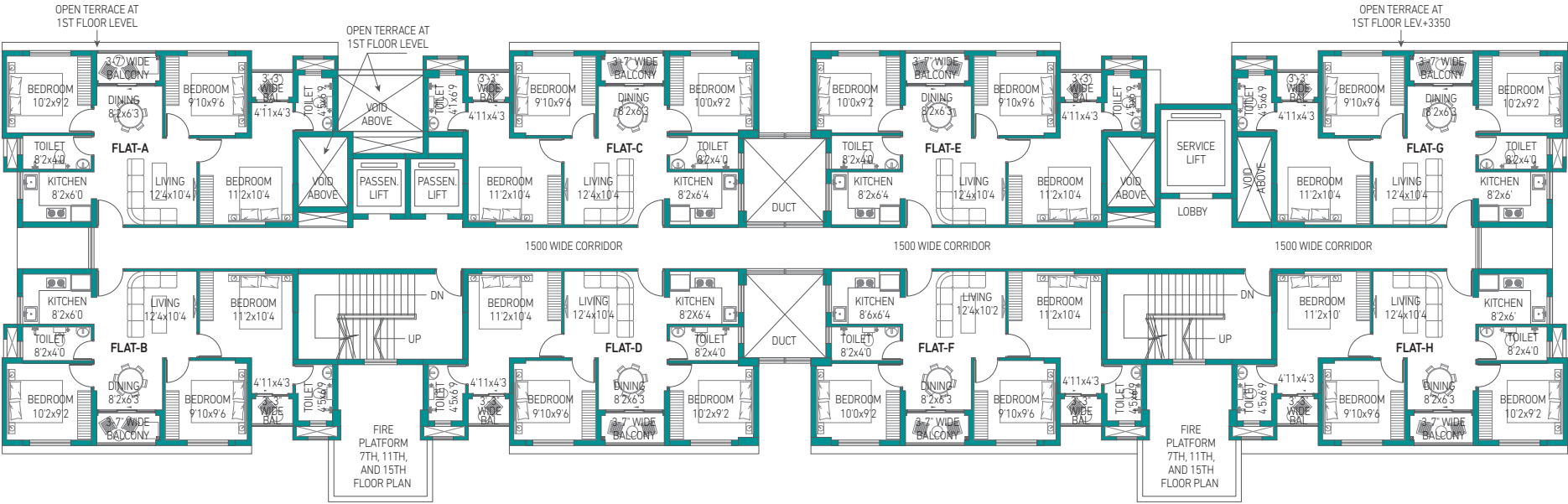
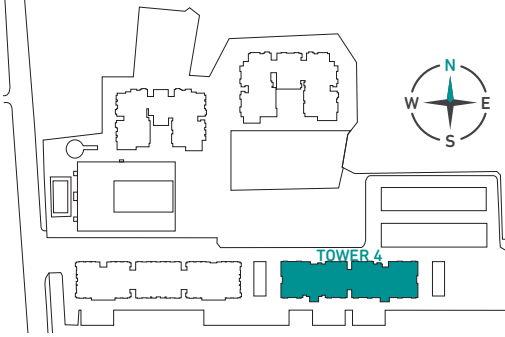


TOWER 4

Flat No.	Type (No. of Bedrooms)	Carpet Area	Balcony Area	Open Terrace Area
A	3	626	43	34
B	3	626	43	0
C	3	629	43	0
D	3	629	43	0
E	3	629	43	0
F	3	629	43	34
G	3	626	43	34
H	3	626	43	34

TOWER 4 [G+XVI]

TYPICAL FLOOR PLAN



TOWER 4 [G+XVI]

FLAT TYPE B (3 BHK)

2nd to 16th Floor



TOWER 4 [G+XVI]

TYPICAL UNIT PLAN (3 BHK + 2T)

FLAT B, C, F, G



SPECIFICATIONS



Walls : Plaster of Paris/Putty/Gypsum Plaster finish on walls

Flooring : Vitrified tiles in the bed rooms, living/dining room

Kitchen : Stone/Tile counter top
Stainless steel sink
Ceramic tiles
Dado up to 2 feet above the kitchen counter

Flooring : Anti-skid Ceramic tiles, Exhaust Point

Toilet : Flooring: Anti-skid Ceramic Tiles
Ceramic tiles on the walls up to Electrical point for Geyser & Exhaust fan
Plumbing provision for hot/cold water line



Doors : Main door - Flush doors
Door frames - Made of wood
Main door fittings - Reputed make door lock/and eyepiece
Internal doors - Flush doors with hardware fitting

Windows : Anodised/Powder Coated Aluminium/UPVC windows

Sanitary Ware : Sanitary ware of reputed make.

Electricals : Concealed copper wiring
Cable TV cabling in the living room. Modular switches of reputed make
Telephone and internet wiring in living or dining area





Precision has been the key in designing your aesthetically beautiful living at Urban Lakes. Intelligently designed, yet emotionally connected to every home, Urban Lakes is here to floor you with its magnificence.



